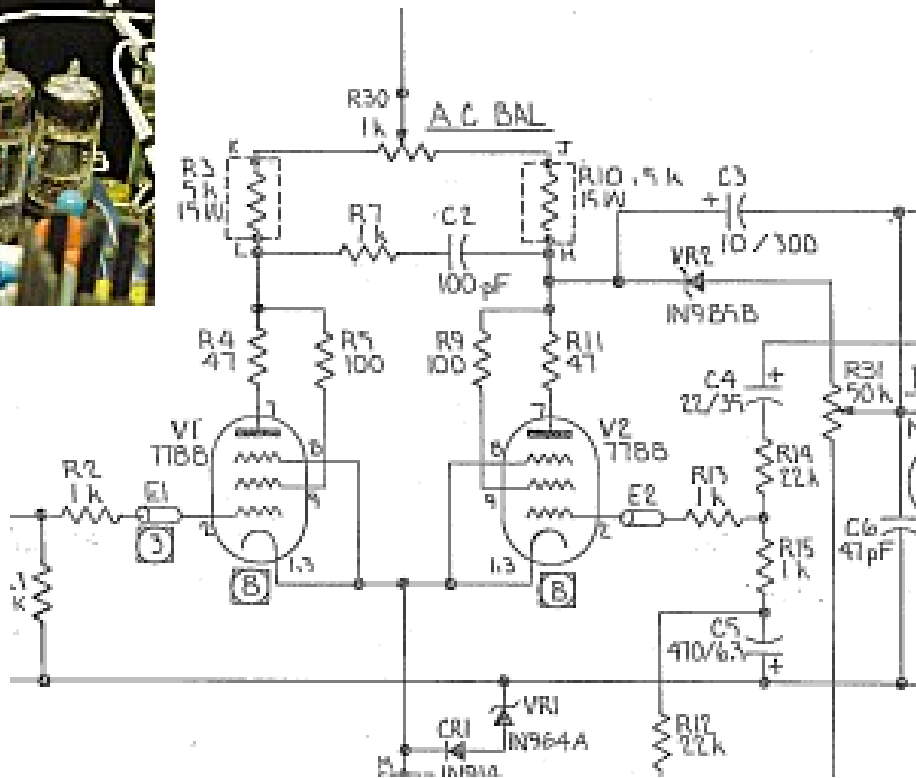


INFINITY HCA

Introduced: 1978
Dimensions: 483 X 508 X 228 mm
Weight: ~43kg
Power consumption: 1500W
Max power: 2X700W

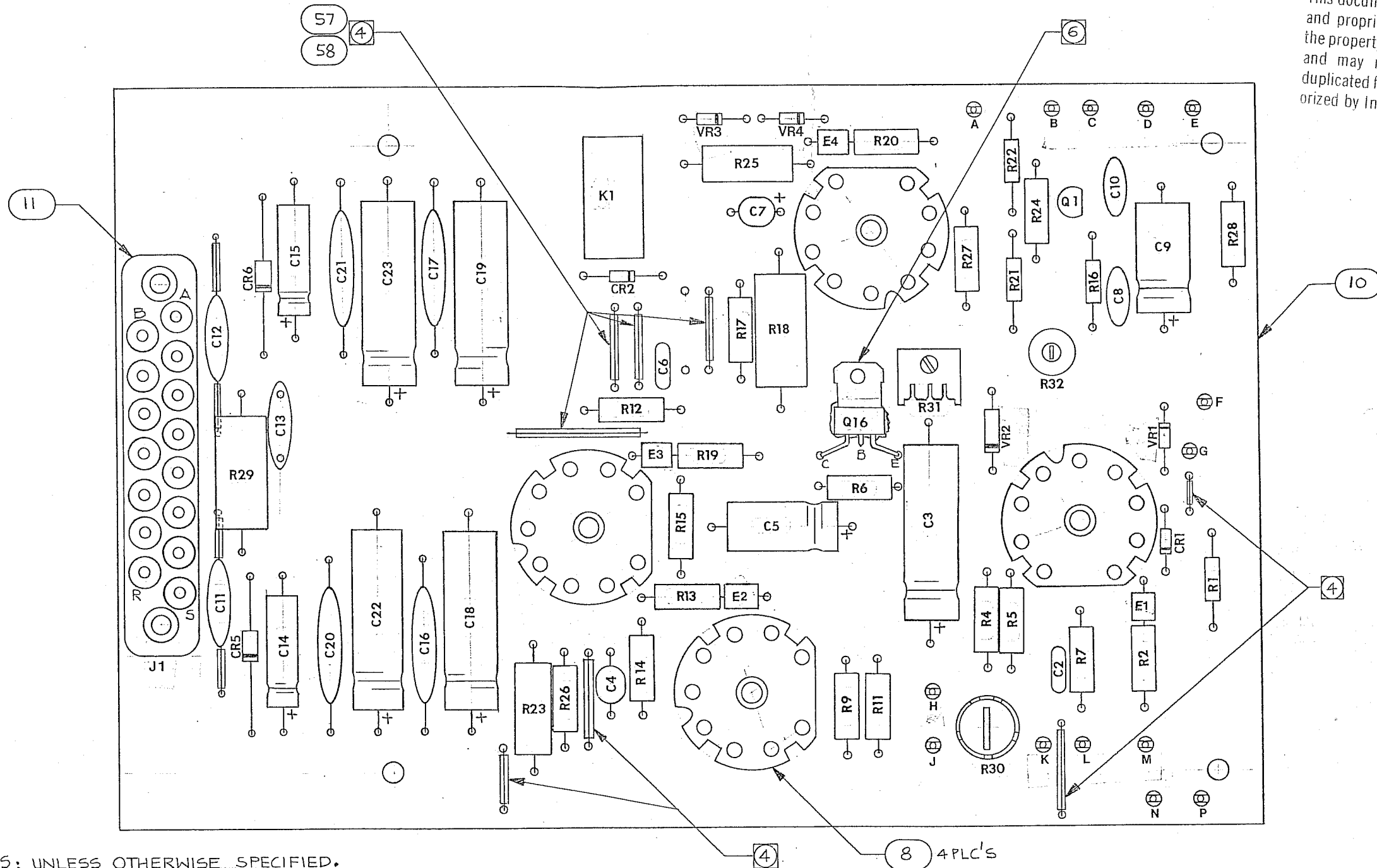
Note: No parts available



REVISIONS				
ZONE	REV	DESCRIPTION	DATE	APPROVED
	A	FIRST ARTICLE	9-28-78	
	B	ADD Q16 - ADDITIONAL UPDATE	4-23-79	VUL

INFINITY SYSTEMS, INC. PROPRIETARY
 This document contains confidential and proprietary information that is the property of Infinity Systems, Inc. and may not be disclosed to or duplicated for others except as authorized by Infinity Systems, Inc.

OCT 08 1993



NOTES: UNLESS OTHERWISE SPECIFIED.

1. USE CO NON-INSULATED TERMINALS INSTALLED PRIOR TO THIS ASSY PER FAB. DWG # 0052-0051-2.
2. INSTALL R18, R23, R29 (ITEM: 52, 53, 54) .06 - .09 OFF BOARD.
3. INSTALL SLEEVING ON BOTH LEGS OF C11 & C12.
4. USE # 22 AWG SOLID WIRE W/ SLEEVING FOR JUMPER (8PLC'S).
5. V1-V4 INSTALLED AT NEXT ASSY LEVEL (717007)
6. CUT BACK BASE OF Q16 TO APPROX. .05 FROM CASE. APPLY COMPOUND TO BACKSIDE OF Q16 UPON INSTALLATION AND FOLD DOWN TOWARD P.C.B AS SHOWN.

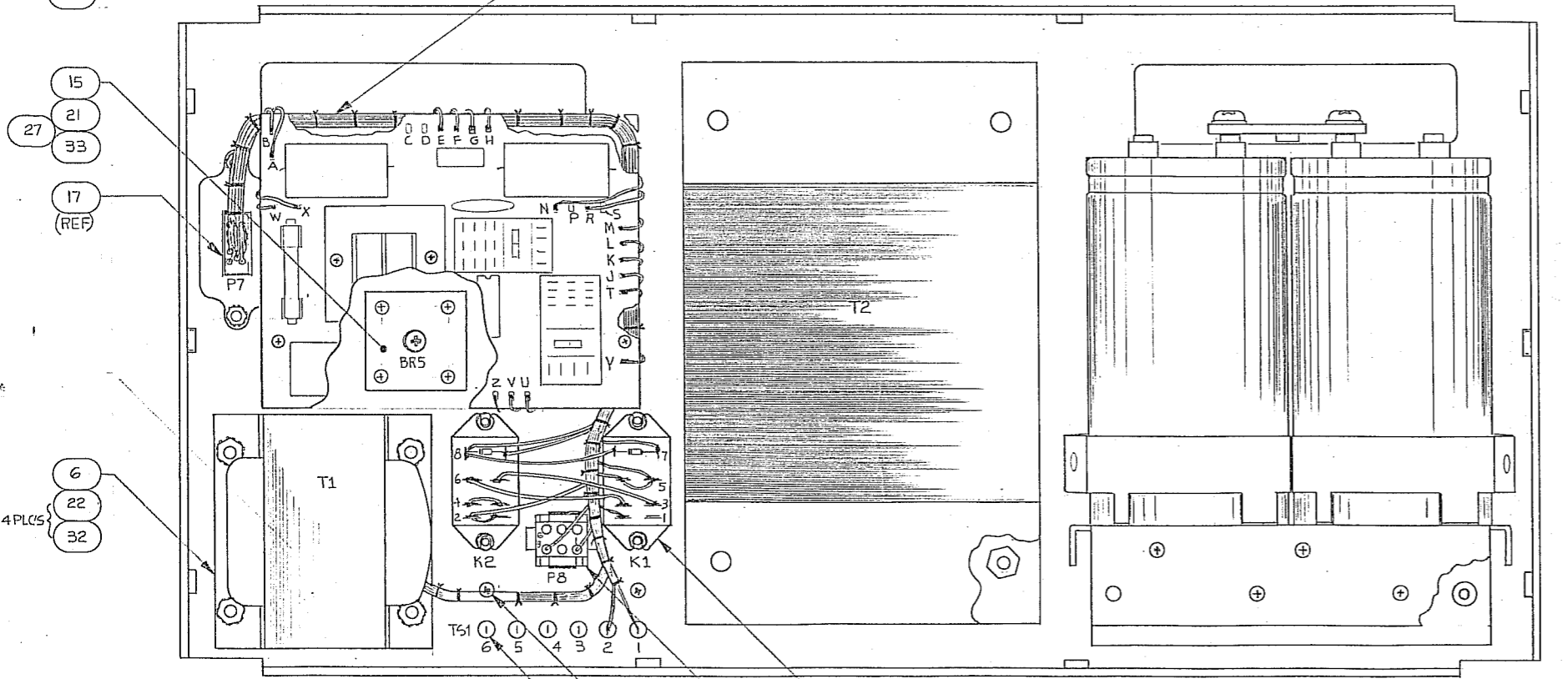
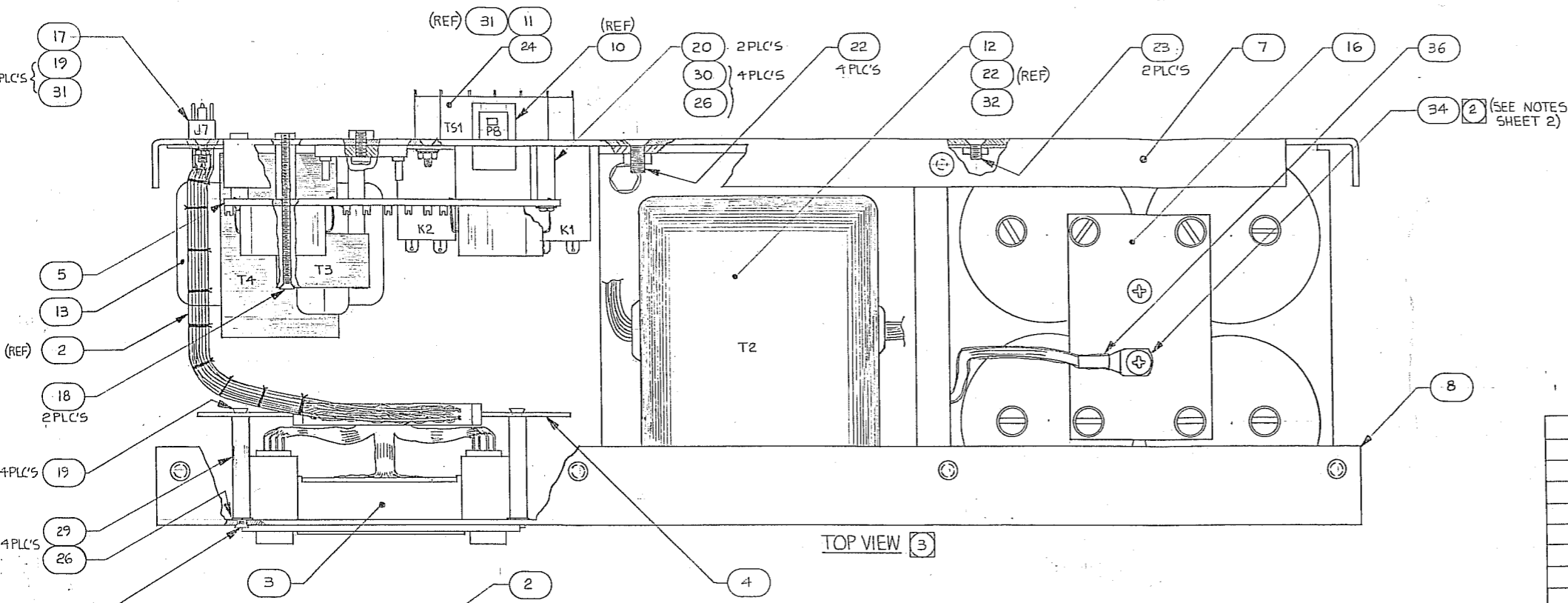
SEE SEPARATE PARTS LIST PN # 717012

QTY REQD	CODE IDENT	PART OR IDENTIFYING NO.	NOMENCLATURE OR DESCRIPTION	MATERIAL SPECIFICATION
PARTS LIST				
UNLESS OTHERWISE SPECIFIED DIMENSIONS ARE IN INCHES TOLERANCES ARE: FRACTIONS .XX DECIMALS .XXX ANGLES =			CONTRACT NO.	
MATERIAL			APPROVALS	DATE
FINISH			DRAWN VUL	5-10-79
NEXT ASSY			CHECKED [Signature]	10-30-79
USED ON			ISSUED	
APPLICATION			CIRCUIT BOARD ASSY AMPLIFIER BRD.	
DO NOT SCALE DRAWING			SIZE C	FSCM NO. 917010
			DWG. NO. DD70-0045-2	REV. B
			SCALE 2/1	SHEET 1 OF 5

REVISIONS				
ZONE	REV.	DESCRIPTION	DATE	APPROVED
	A	FIRST ARTICLE	8-22-79	

INFINITY SYSTEMS, INC. PROPRIETARY
 This document contains confidential and proprietary information that is the property of Infinity Systems, Inc. and may not be disclosed to or duplicated for others except as authorized by Infinity Systems, Inc.

OCT 08 1993



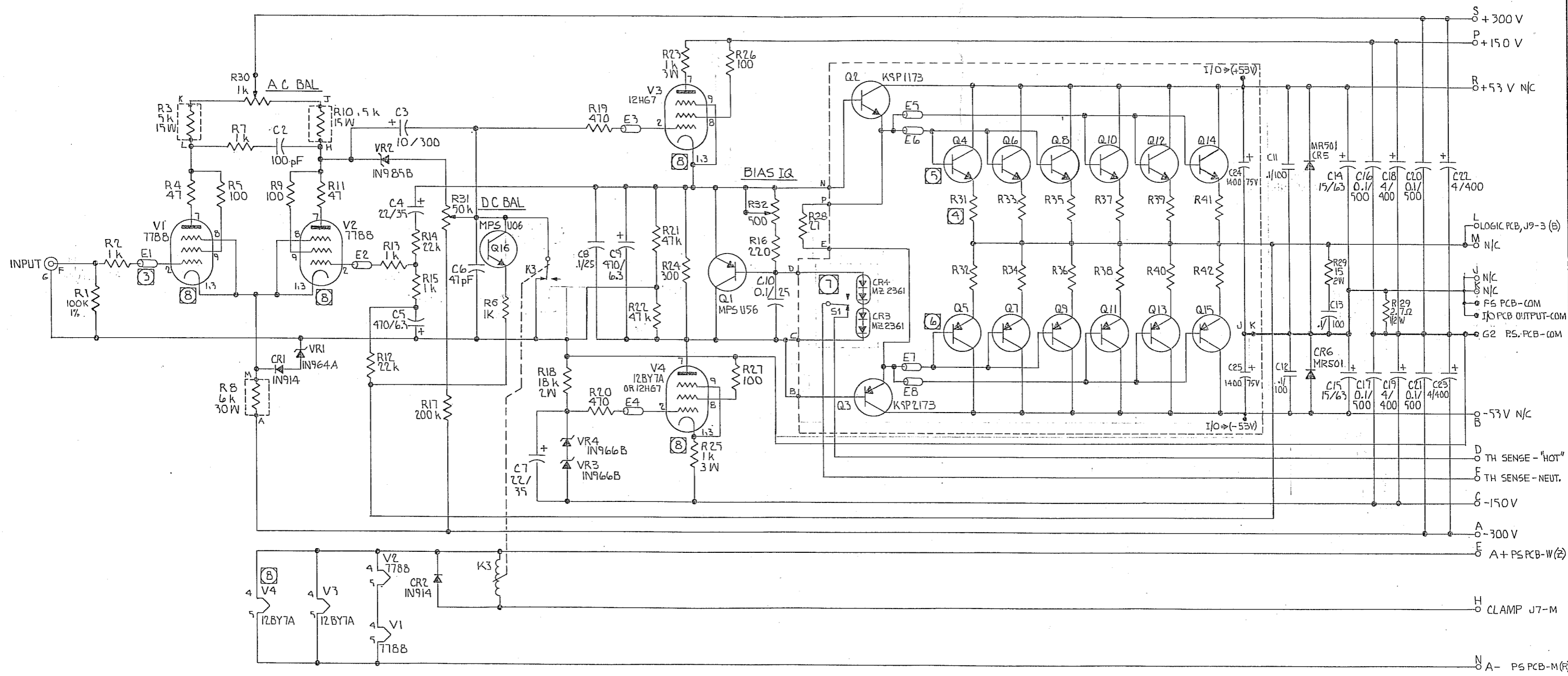
NOTES: UNLESS OTHERWISE SPECIFIED.
 1. DRILL OUT 6 PLC'S 1/4" DIA. INSERT SPACERS AND GLUE IN PLACE.
 2. THIS ASSY DRAWING SHOWS INTENDED LAYOUT FOR P.S. HARNESS. REFER TO MASTER WIRING DIAGRAM 240V ONLY FOR VISIBLE CHANGES TO THIS PRINT.
 3. SUB-FRONT PANEL IS SHOWN IN PLACE FOR ASSY PURPOSES AND IS PART OF THIS ASSY; HOWEVER IT SHALL BE TIGHTENED DOWN W/HARDWARE @ LATER ASSY AFTER ALL TESTING HAS BEEN PERFORMED.

A/R	QTY	CODE	PART OR IDENTIFYING NO.	NOMENCLATURE OR DESCRIPTION	MATERIAL SPECIFICATION	ITEM
A/R	2		507208	TUBING, SHRINK, CLEAR, 1/4 DIA.		40
	2		522085	LOCKWASHER #8		39
	2		503195	SCREW #8-32 x 3 B.LG., PAN HD., PHIL.		38
	2		504737	LUG #10, YAVIB (8-10)		37
A/R	2		507202	TUBING, HEATSHRINK, CLEAR, 1/8 DIA.		36
A/R	1		601071	EPOXY LEMENT OR EQUIV		35
	1		504736	LUG # 10, YAV8C-L		34
A/R	1		601102	COMPOUND, THERMAL		33
	8		520247	KEPNUT #10		32
	8		520241	KEPNUT #4		31
	4		534047	SPACER #4, 3/4" LG., NYLON		30
	4		531043	STAND OFF #4, 1 1/2" LG., STEEL, ROUND		29
	4		521045	WASHER #4, LARGE PATTERN, FLAT		28
	1		503512	WASHER #8, INTERNAL TOOTH		27
	4		503505	WASHER #4, INTERNAL TOOTH		26
	6		531042	SPACER #4, NYLON, 1/4" LG.		25
	2		512106	SCREW #4-40 x 5/8" LG., PAN HD., PHIL., BLK		24
	14		514061	SCREW #8-32 x 3/8" LG., FLAT HD., PHIL., 100°	Lead, 100°	23
	12		516085	SCREW #10-32 x 1/2" LG., FLAT HD., PHIL., 100°	Ti-T2	22
	1		503196	SCREW #8-32 x 1 1/2" LG., PAN HD., PHIL., BLK	Lead	21
	2		512181	SCREW #4-40 x 1 1/8" LG., PAN HD., PHIL.	100° Flat	20
	14		503146	SCREW #4-40 x 3/8" LG., 100° FLAT HD., PHIL.	100° Flat	19
	2		512341	SCREW #4-40 x 2 3/16" LG., 100° FLAT HD., PHIL.	Ti-T2	18
	1		502705	CHASSIS, AMPLIFIER		17
	1		717018	MAIN FILTER ASSY		16
	1		302000	DIODE, BRIDGE BR92A (BR5)		15
	1		717007	PCB ASSY, POWER SUPPLY		14
	1		401401	TRANSFORMER, POWER, (HCA-T1)		13
	1		401403	TRANSFORMER, T2 (HCA-B)		12
	1		439209	CONNECTOR, R5B6SP061401 (TS1)	BUCHANNON	11
	1		439216	CONNECTOR, 5M36R-1 RECP (PB)	BURNDY	10
	2		470018	RELAY, HL2TM-12VDC (K1, K2)	AROMAT	9
	1		502703	PANEL, SUB-FRONT (HCA)		8
	1		502704	PANEL, INTERIOR (HCA)		7
	2		502710	BRACKET, MOUNTING, T1 (HCA)		6
	1		717011	PCB ASSY, RELAY		5
	1		717013	PCB ASSY, LOGIC		4
	1		717017	ANNUNCIATOR ASSY		3
	1		717023	HARNESS ASSY, POWER SUPPLY		2
REF			DD60-0064-2	WIRING DIAGRAM		1

UNLESS OTHERWISE SPECIFIED DIMENSIONS ARE IN INCHES TOLERANCES ARE:		CONTRACT NO.		PARTS LIST	
FRACTIONS	DECIMALS	ANGLES	APPROVALS	DATE	
= .XX =	= .XXX =	=			
MATERIAL			DRAWN	717031	POWER SUPPLY ASSEMBLY
			CHECKED	10-27-79	PN# 717002
			ISSUED		
NEXT ASSY	USED ON		SIZE	FSCM NO.	DWG. NO.
			D	917010	DD70-0059-2
APPLICATION	DO NOT SCALE DRAWING		SCALE	1/1	SHEET 1 OF 3

ECC of NTE
 Q4, 6, 8, 10, 12, 14 / 2SC1586 (388) NPN
 Q5, 7, 9, 11, 13, 15 / 2SA909 (285) PNP

REV.		DESCRIPTION	DATE	APPROVED
A	ORIGINAL			
B	ADD Q16 + ADDITIONAL UPDATE		4-23-79	VLC



9. ALL COMPONENTS SHOWN INSIDE DOTTED LINES MEAN THEIR LOCATIONS ARE OFF THE P.C. BOARD.
8. HEATER ELEMENTS SHOWN REMOVED AND ISOLATED FOR CLARITY.
1. S1, CR2 & CR3 ARE ALL MOUNTED ON HEATSINK; ASSY # 717016
6. Q4, 6, 8, 10, 12, 14 ARE ISI P/N# 321586
5. Q5, 7, 9, 11, 13, 15 ARE ISI P/N# 320909
4. R31-R42 ARE 0.5 Ω, 3 W.
3. E1-E8 ARE FERRITE BEADS ISI P/N
2. CAPACITOR VALUES IN MICROFARADS / VOLTAGES.
1. RESISTOR VALUES IN OHMS, 1/2 W, 5%.
- NOTES: UNLESS OTHERWISE SPECIFIED

INFINITY SYSTEMS, INC. PROPRIETARY

This document contains confidential and proprietary information that is the property of Infinity Systems, Inc. and may not be disclosed to or duplicated for others except as authorized by Infinity Systems, Inc.

LEGEND

OCT 08 1993

QTY	CODE	PART OR IDENTIFYING NO.	NAME/CLATURE OR DESCRIPTION	MATERIAL SPECIFICATION
-PARTS LIST-				
UNLESS OTHERWISE SPECIFIED - DIMENSIONS ARE IN INCHES - SQUARES ARE - FRACTIONS - DECIMALS - ANGLES - ° - .XXX = °		CONTRACT NO.		
MATERIAL		APPROVALS	DATE	SCHEMATIC AMPLIFIER BD. & HEATSINK ASSY - HCA PN # 717012 & 717016
FINISH		DRAWN	9/28/79	
NEXT ASSY		CHECKED	5-18-79	
USED ON		ISSUED	BHK 11/1/79	SIZE FSCM NO. DWG. NO. REV. D 917010 DD60-0005-2 B
APPLICATION		DO NOT SCALE DRAWING		SCALE

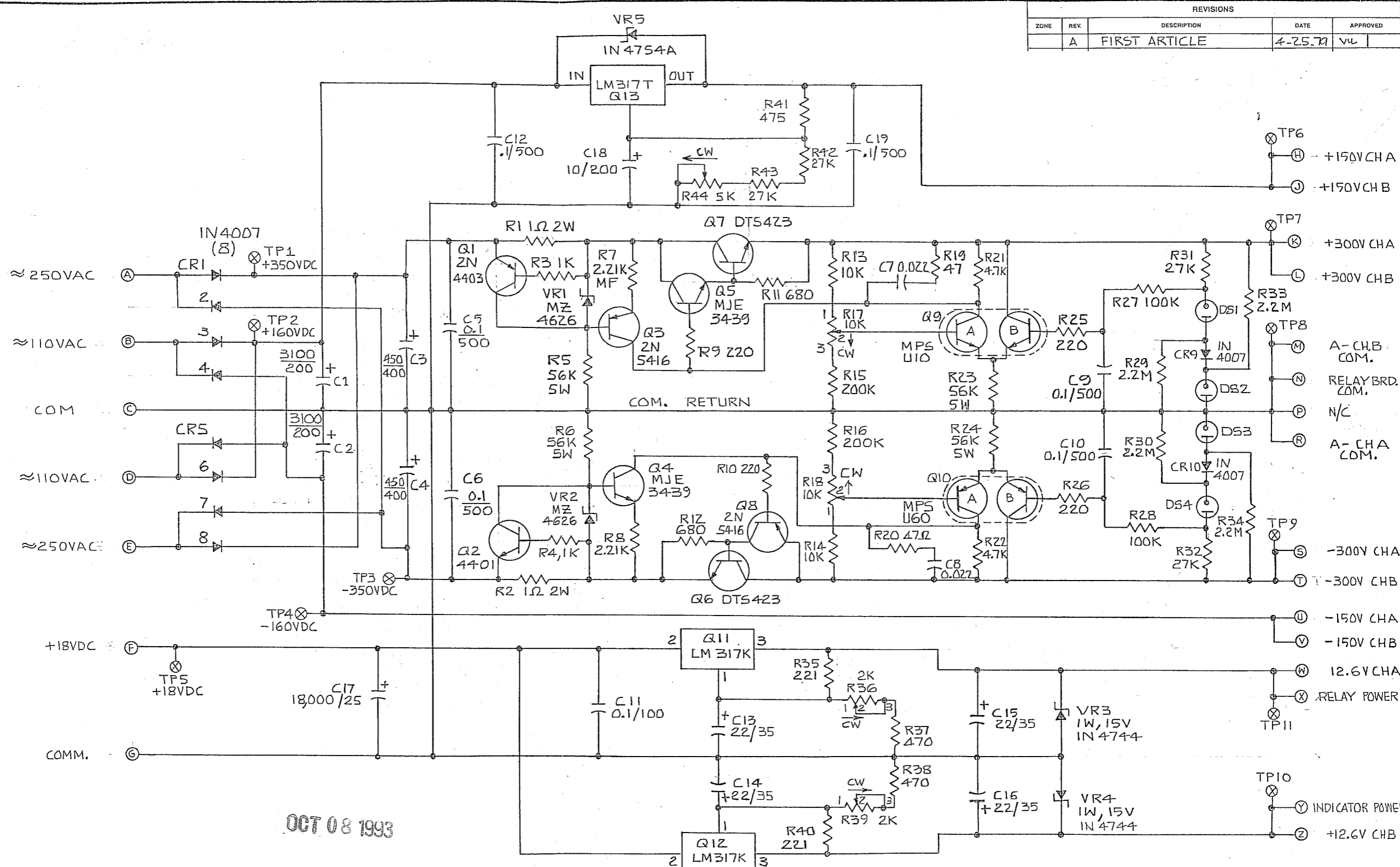
D

C

B

A

REVISIONS				
ZONE	REV.	DESCRIPTION	DATE	APPROVED
A		FIRST ARTICLE	4-25-79	VUL



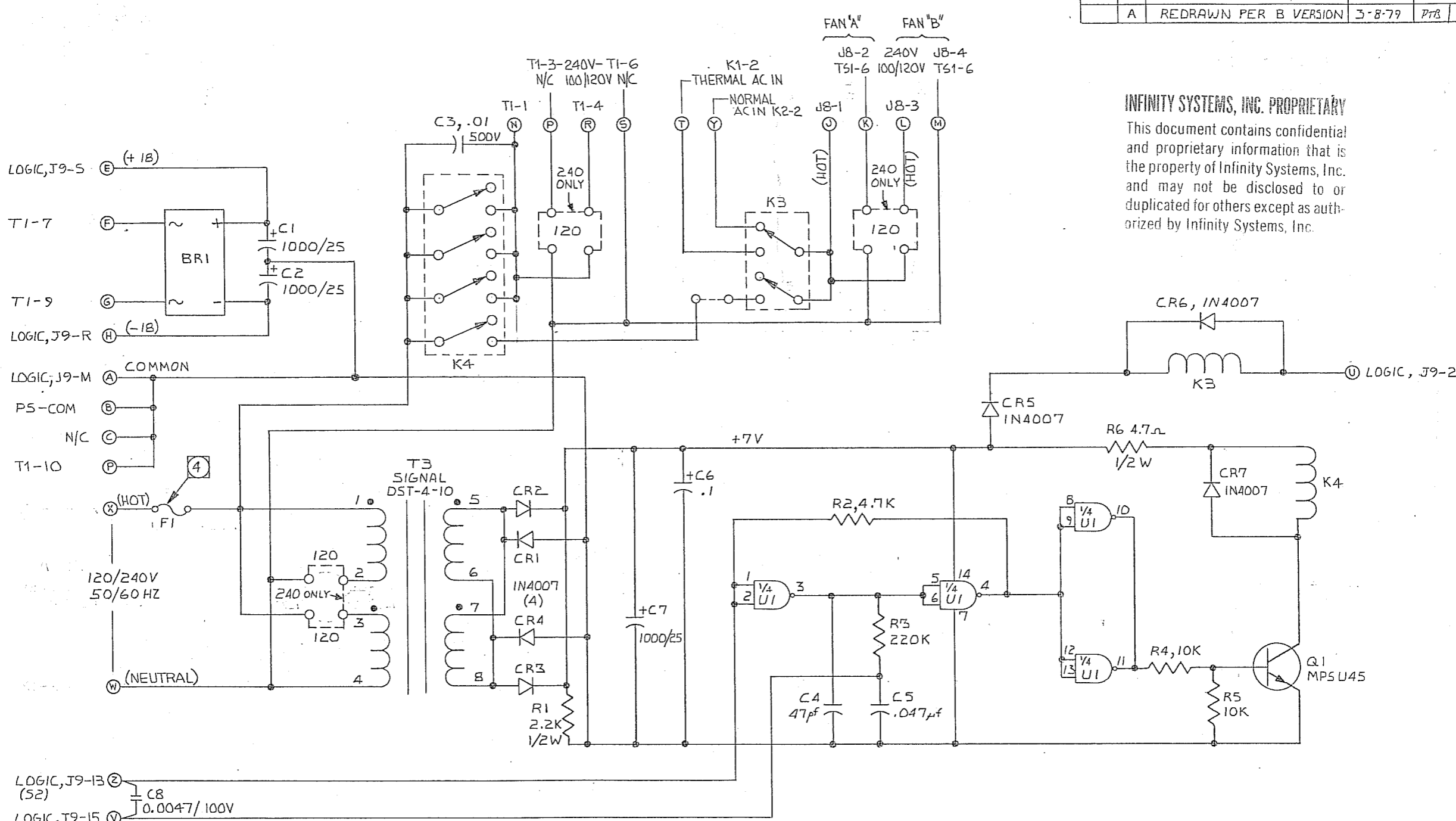
OCT 08 1993

NOTES: UNLESS OTHERWISE SPECIFIED,
 1. RESISTORS ARE IN OHMS, 1/2W, 5%.
 2. CAPACITORS ARE IN MICROFARADS.

INFINITY SYSTEMS, INC. PROPRIETARY
 This document contains confidential and proprietary information that is the property of Infinity Systems, Inc. and may not be disclosed to or duplicated for others except as authorized by Infinity Systems, Inc.

QTY	CODE	PART OR IDENTIFYING NO.	NOMENCLATURE OR DESCRIPTION	MATERIAL SPECIFICATION
PARTS LIST				
UNLESS OTHERWISE SPECIFIED DIMENSIONS ARE IN INCHES TOLERANCES ARE: FRACTIONS = DECIMALS = ANGLES =			CONTRACT NO.	
MATERIAL		APPROVALS	DATE	SCHEMATIC DIAGRAM POWER SUPPLY P.C.B. ASS'Y P/N 717009
FINISH		DRAWN	5-3-79	
NEXT ASSY		CHECKED	11/1/79	
USED ON		ISSUED		SIZE C
APPLICATION		DO NOT SCALE DRAWING		FSCM NO. 917011
				DWG. NO. DD60-0001-2
				REV. A
				SCALE
				SHEET 1 OF 1

REVISIONS				
ZONE	REV.	DESCRIPTION	DATE	APPROVED
A		REDRAWN PER B VERSION	3-8-79	PTB

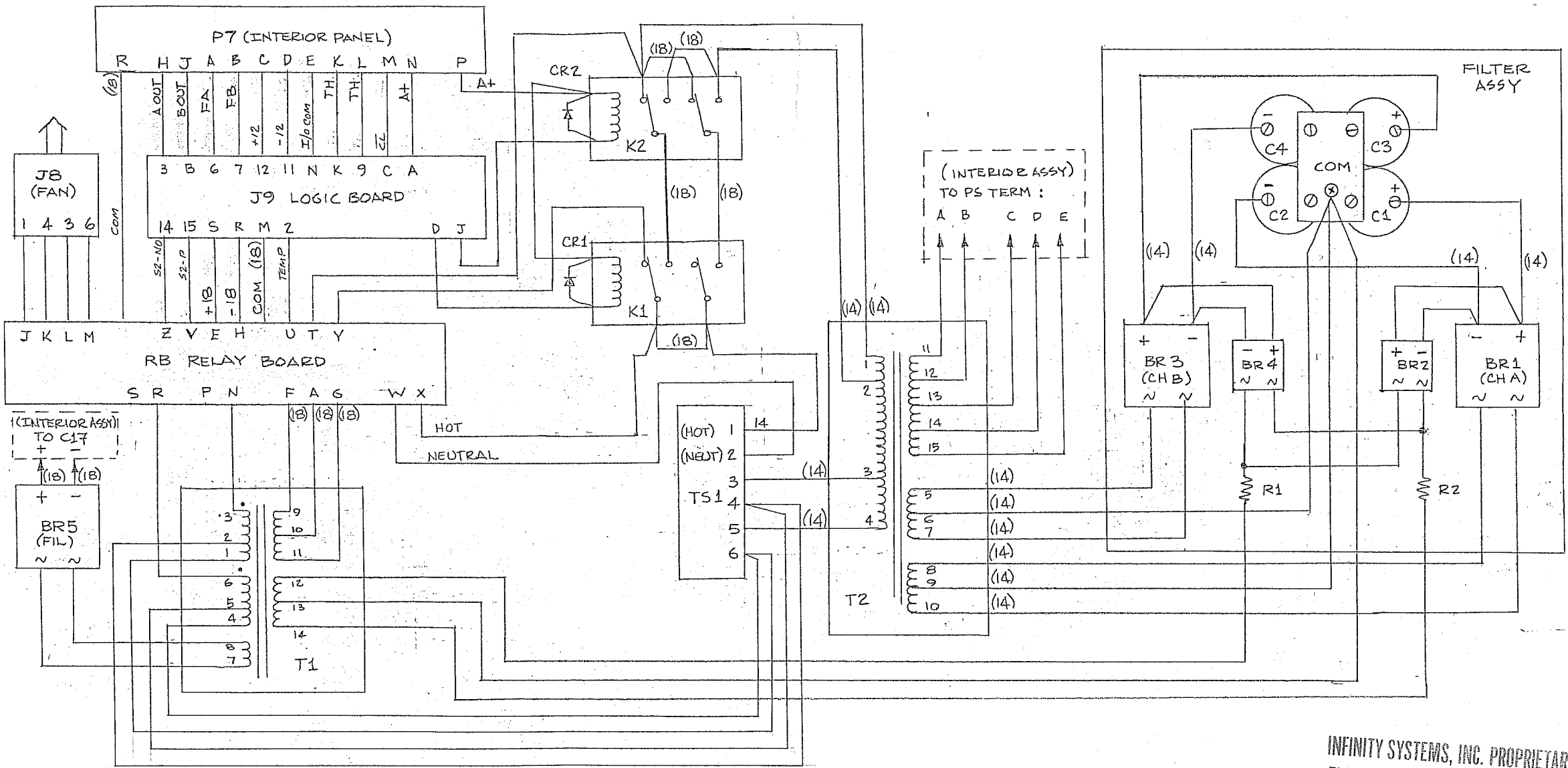


INFINITY SYSTEMS, INC. PROPRIETARY
 This document contains confidential and proprietary information that is the property of Infinity Systems, Inc. and may not be disclosed to or duplicated for others except as authorized by Infinity Systems, Inc.

- ④ FOR 120VAC OPERATION, F1 = 1 AMP. S.B.
 FOR 240VAC OPERATION, F1 = .5 AMP. S.B.
- U1 IS CMOS 4011B
 - ALL CAPACITORS IN MICROFARADS.
 - ALL RESISTORS IN OHMS, 1/4 W, ±5%.
- NOTES—UNLESS OTHERWISE SPECIFIED:

OCT 08 1993

QTY REQD	CODE IDENT	PART OR IDENTIFYING NO.	NOMENCLATURE OR DESCRIPTION	MATERIAL SPECIFICATION
PARTS LIST				
UNLESS OTHERWISE SPECIFIED DIMENSIONS ARE IN INCHES TOLERANCES ARE: FRACTIONS DECIMALS ANGLES = .XX = .XXX =				
MATERIAL		CONTRACT NO.		APPROVALS DATE 3-8-79
FINISH		DRAWN P. BROWN		
NEXT ASSY		CHECKED [Signature]		DATE 4/6/79
USED ON		ISSUED [Signature]		SCALE 11/1/79
APPLICATION		DO NOT SCALE DRAWING		SIZE C
			FSCM NO. 917010	DWG. NO. DD60-0002-2
			SCALE	REV. A
			SHEET	



NOTES: ALL WIRE TYPE "E" TEFLON STRANDED; SIZE AWG 22 UNLESS OTHERWISE NOTED ().

POWER SUPPLY ASSY WIRING DIAGRAM

6-1-79
Bob Day

OCT 08 1993

INFINITY SYSTEMS, INC. PROPRIETARY
This document contains confidential and proprietary information that is the property of Infinity Systems, Inc. and may not be disclosed to or duplicated for others except as authorized by Infinity Systems, Inc.